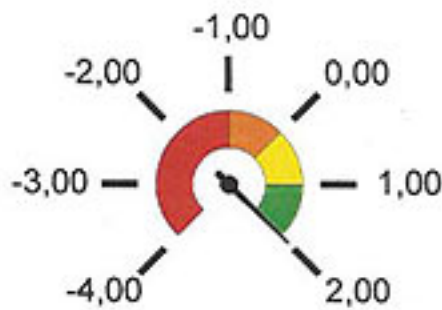


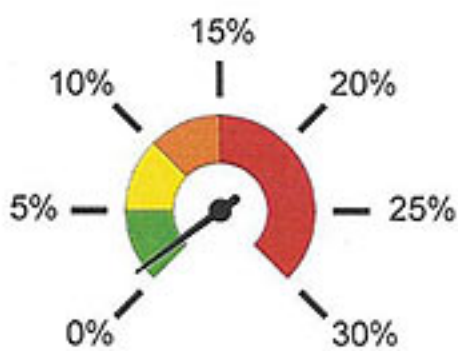


**NL Analyse - Dashboard**

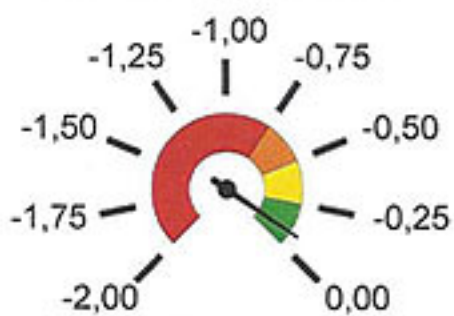
Result 2,15 € /lv  
( 0,023 € /Kg )



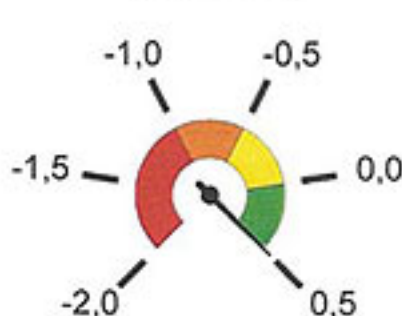
1 % buiten Gew-Masker



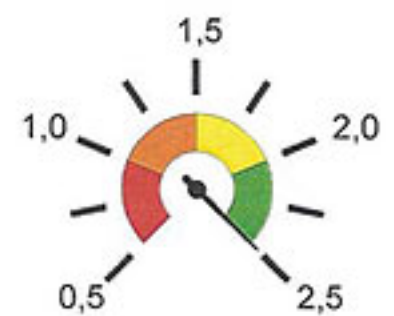
Gewicht -0,08 € /lv



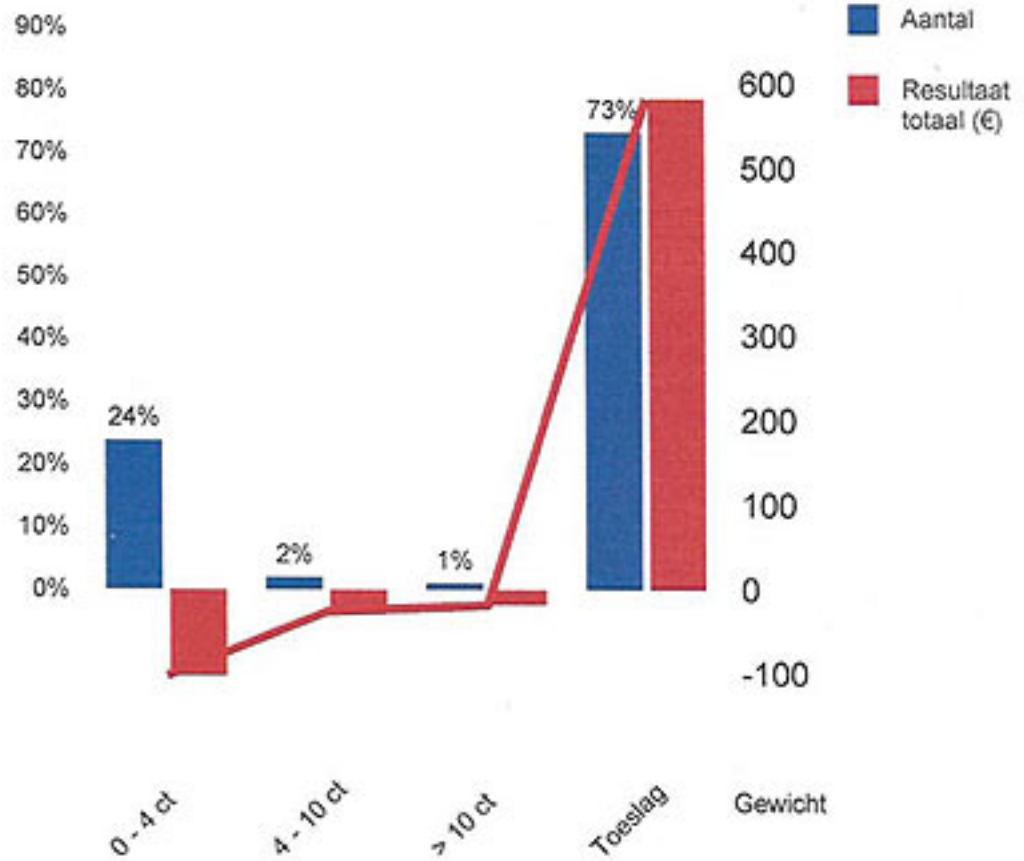
Mvl Spek Spier Type:  
1,77 € /lv



Concept 3,45 € /lv



**Spreiding Korting/Toeslag en Resultaat**



Korting Financiëel €ct /kg	Aantal	Perc.	Netto €/kg	Result € Totaal	Result €/lv	Gewicht €/lv	Mvl% €/lv	Spek €/lv	Spier €/lv	Type €/lv	Concept €/lv	Beer €/lv	Lever €/lv
Toeslag	148	73%	1,725	582,35	3,93	0,00	0,96			1,37	2,68	-1,05	-0,02
> 10 ct	2	1%	1,562	-18,74	-9,37	-7,96	1,59					-3,00	
4 - 10 ct	4	2%	1,610	-26,24	-6,56	0,00	-4,81					-1,50	-0,25
0 - 4 ct	48	24%	1,659	-102,23	-2,13	0,00	0,16			0,46		-2,75	
<b>Totaal</b>	<b>202</b>	<b>100%</b>	<b>1,705</b>	<b>435,14</b>	<b>2,15</b>	<b>-0,08</b>	<b>0,66</b>			<b>1,11</b>	<b>1,96</b>	<b>-1,49</b>	<b>-0,02</b>

Korting Technisch €ct /kg	Aantal	Perc.	Result €/lv	Gew (Kg)	Mvl%	Spek	Spier	In Concept	%AA	% B/C	Beer
Toeslag	148	73%	3,93	92,4	60,1	12,4	65,7	72%	49%	0%	35%
> 10 ct	2	1%	-9,37	79,6	61,5	9,8	50,9	0%	0%	0%	100%
4 - 10 ct	4	2%	-6,56	90,2	56,5	17,6	59,1	0%	0%	0%	50%
0 - 4 ct	48	24%	-2,13	91,8	59,2	13,6	58,2	0%	17%	0%	92%
<b>Totaal</b>	<b>202</b>	<b>100%</b>	<b>2,15</b>	<b>92,1</b>	<b>59,8</b>	<b>12,8</b>	<b>63,7</b>	<b>53%</b>	<b>40%</b>	<b>0%</b>	<b>50%</b>



**NL Analyse - Gewicht**

Gewicht 92,1 Kg



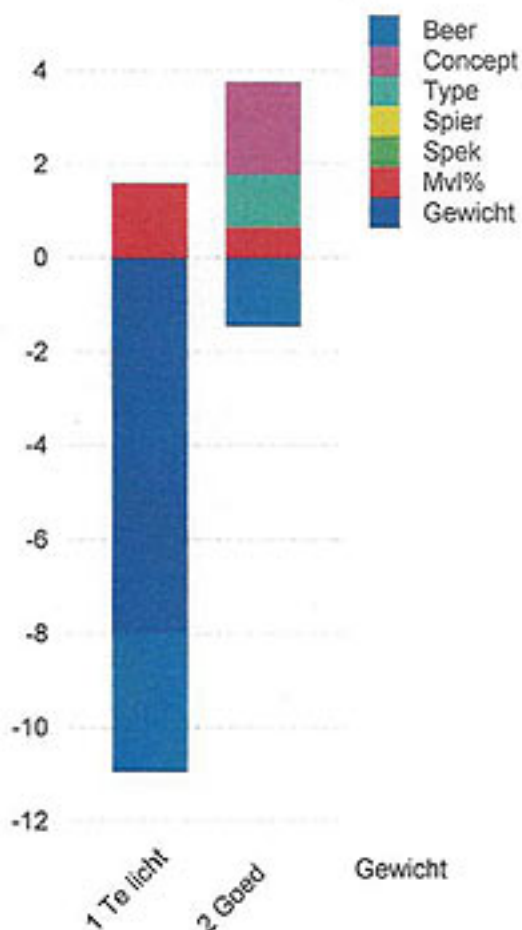
1 % buiten Gew-Masker



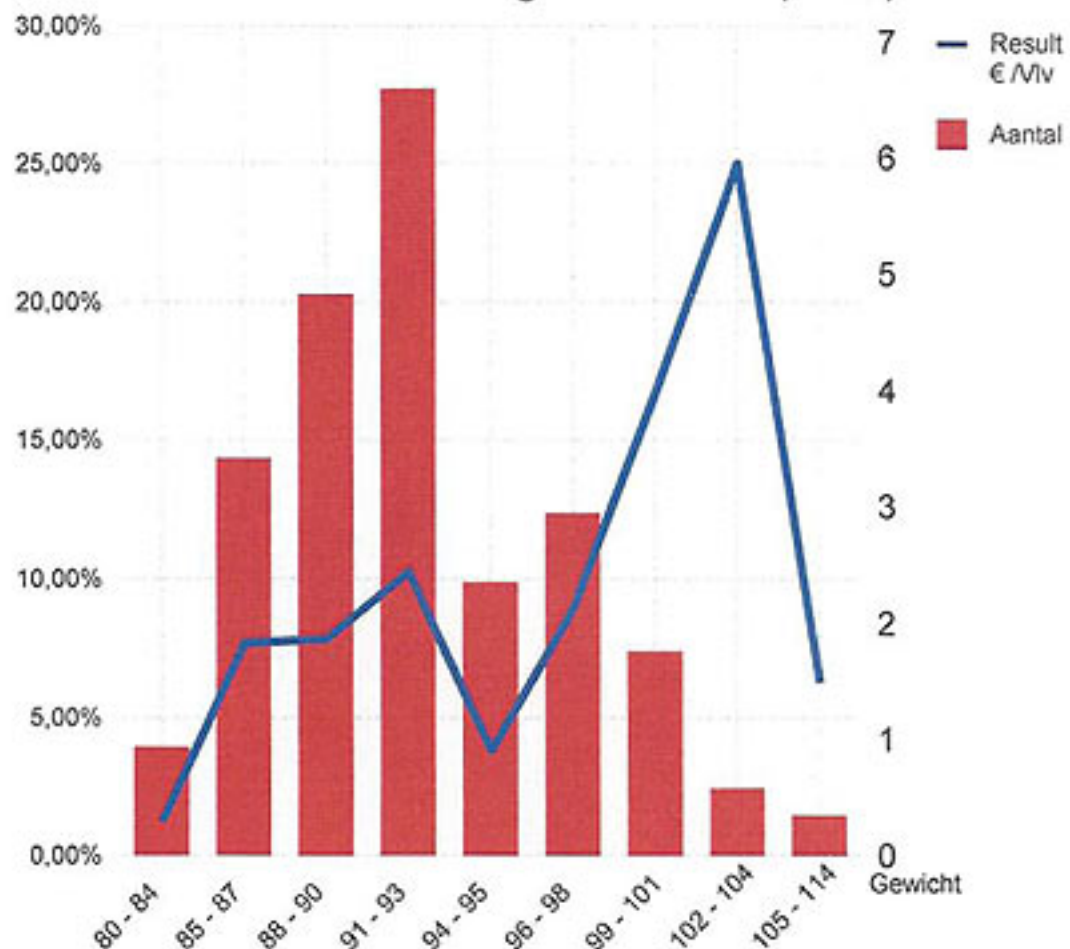
Gewicht -0,08 € /lv



Gewicht: € Korting /varken



Gewichtsverdeling en Resultaat (€ /lv)

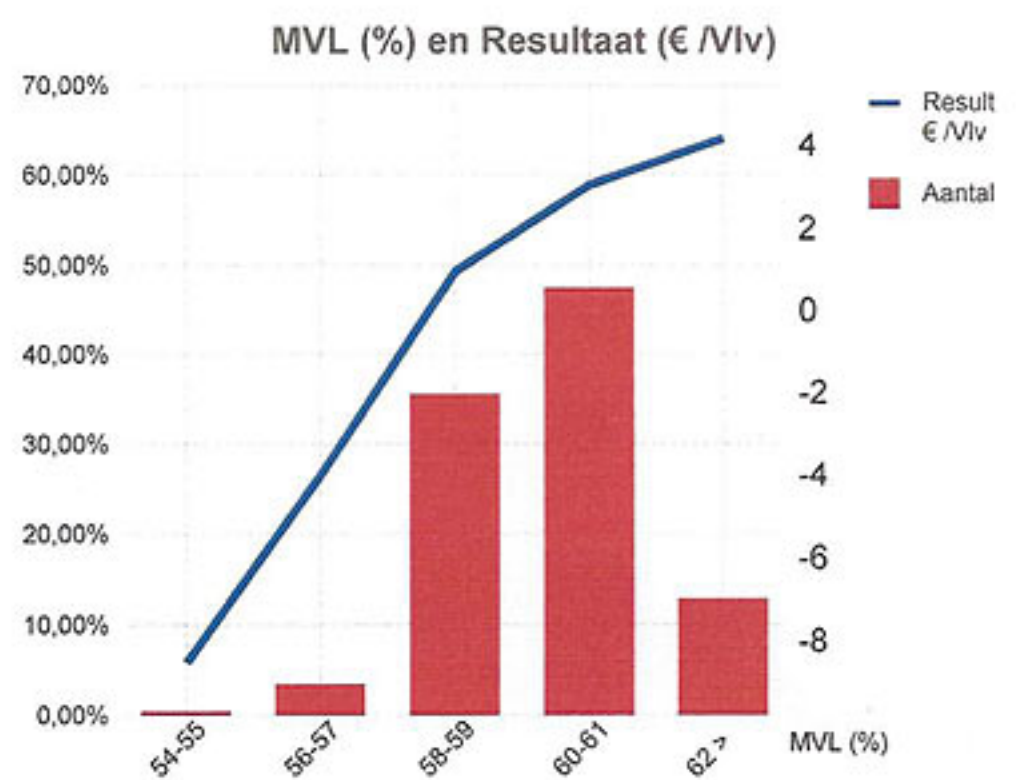
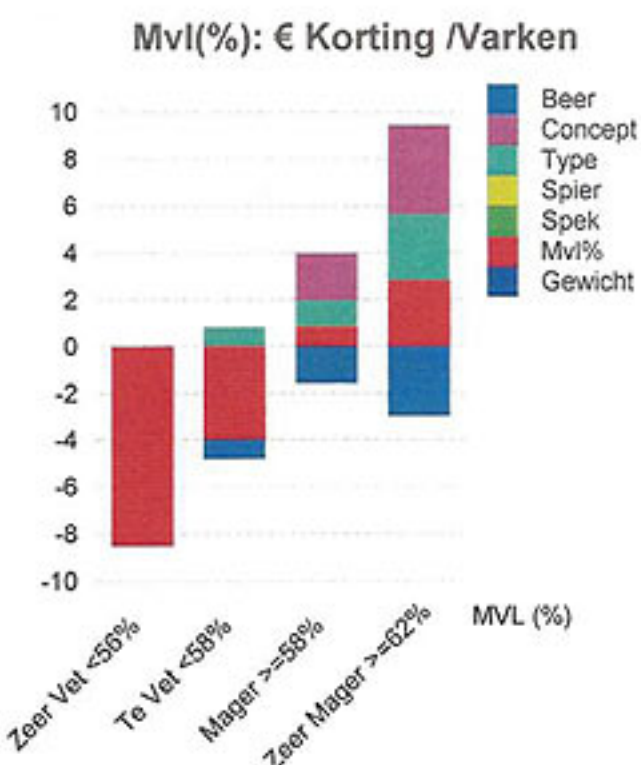
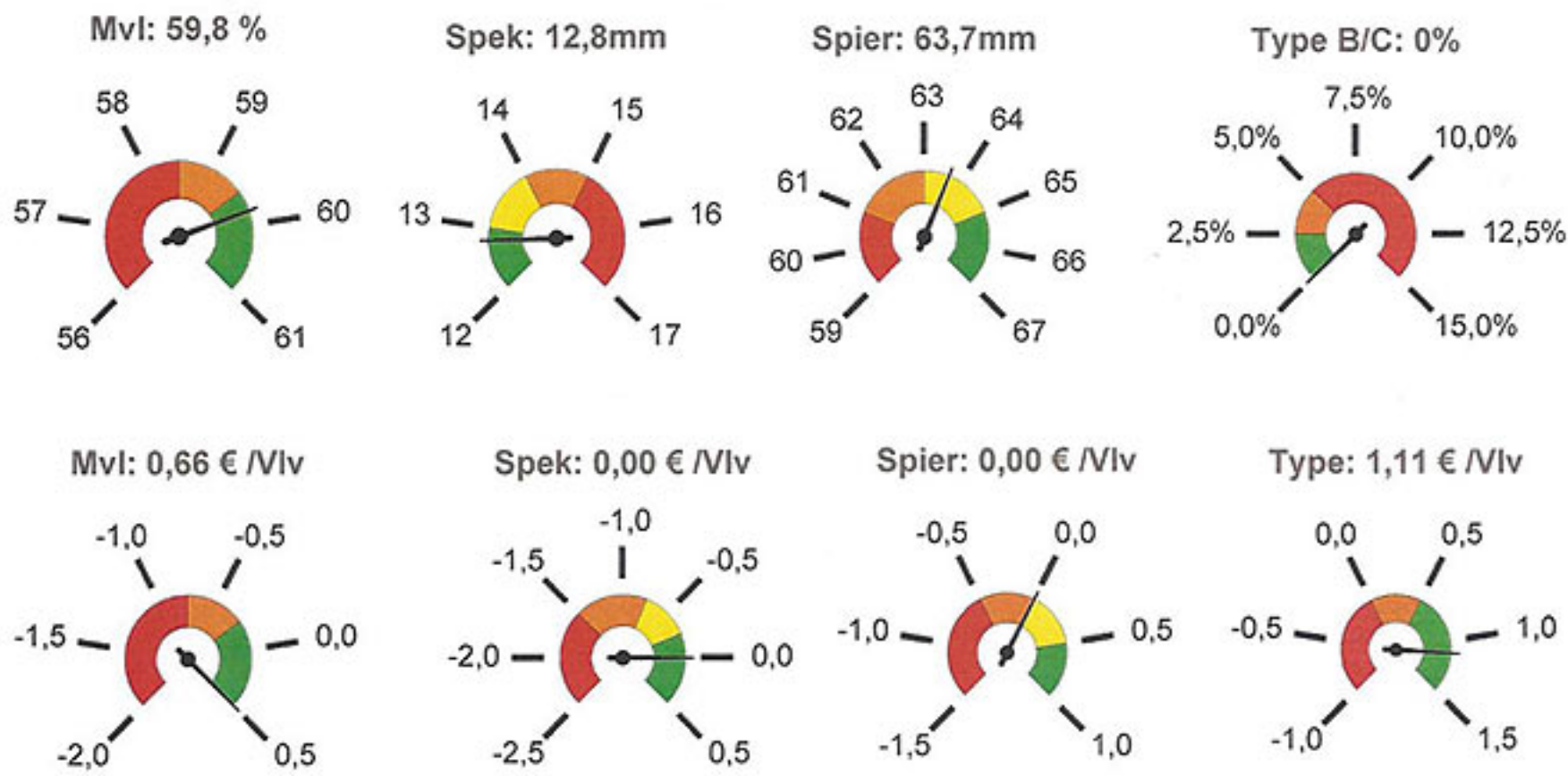


Gewicht Technisch	Aantal	Perc.	Result € /lv	Gew (Kg)	Mvl%	Spek	Spier	In Concept	%AA	% B/C	Beer
80 - 84	8	4%	0,29	82,4	60,8	11,1	58,2	50%	13%	0%	38%
85 - 87	29	14%	1,84	86,2	59,9	12,6	61,9	45%	38%	0%	48%
88 - 90	41	20%	1,87	89,1	59,8	12,8	63,8	54%	39%	0%	59%
91 - 93	56	28%	2,45	92,0	60,0	12,5	63,3	52%	46%	0%	50%
94 - 95	20	10%	0,91	94,6	59,1	13,9	65,3	40%	35%	0%	50%
96 - 98	25	12%	2,13	96,9	59,4	13,4	64,6	60%	32%	0%	52%
99 - 101	15	7%	4,00	99,9	60,4	11,9	66,0	67%	47%	0%	40%
102 - 104	5	2%	5,95	102,7	58,9	14,3	68,9	100%	60%	0%	0%
105 - 114	3	1%	1,50	105,1	58,6	14,6	61,8	33%	67%	0%	67%
<b>Totaal</b>	<b>202</b>	<b>100%</b>	<b>2,15</b>	<b>92,1</b>	<b>59,8</b>	<b>12,8</b>	<b>63,7</b>	<b>53%</b>	<b>40%</b>	<b>0%</b>	<b>50%</b>

Gewicht Financiëel	Aantal	Perc.	Netto €/kg	Result € Totaal	Result € /lv	Gewicht € /lv	Mvl% € /lv	Spek € /lv	Spier € /lv	Type € /lv	Concept € /lv	Beer € /lv
1 Te licht	2	1%	<b>1,562</b>	-18,74	-9,37	-7,96	1,59					-3,00
2 Goed	200	99%	<b>1,707</b>	453,88	2,27	0,00	0,65			1,13	1,98	-1,47
<b>Totaal</b>	<b>202</b>	<b>100%</b>	<b>1,705</b>	<b>435,14</b>	<b>2,15</b>	<b>-0,08</b>	<b>0,66</b>			<b>1,11</b>	<b>1,96</b>	<b>-1,49</b>



**NL Analyse - Vlees**



MVL% Technisch	Aantal	Perc.	Result € /Iv	Gew (Kg)	Mvl%	Spek	Spier	In Concept	%AA	% B/C	Beer
54-55	1	0%	-8,50	94,5	55,3	19,3	53,8	0%	0%	0%	0%
56-57	7	3%	-4,00	93,0	56,6	17,7	62,7	0%	29%	0%	29%
58-59	72	36%	0,96	93,4	58,7	14,4	63,4	43%	28%	0%	49%
60-61	96	48%	3,06	91,2	60,3	12,0	63,8	60%	44%	0%	53%
62 >	26	13%	4,18	91,3	62,0	9,5	64,4	69%	65%	0%	46%
<b>Totaal</b>	<b>202</b>	<b>100%</b>	<b>2,15</b>	<b>92,1</b>	<b>59,8</b>	<b>12,8</b>	<b>63,7</b>	<b>53%</b>	<b>40%</b>	<b>0%</b>	<b>50%</b>

MVL% Financiëel	Aantal	Perc.	Netto €/kg	Result € Totaal	Result € /Iv	Gewicht € /Iv	Mvl% € /Iv	Spek €/Iv	Spier €/Iv	Type €/Iv	Concept €/Iv	Beer €/Iv
Zeer Vet <56%	1	0%	1,593	-8,50	-8,50	0,00	-8,50					
Te Vet <58%	7	3%	1,639	-27,99	-4,00	0,00	-3,97			0,83		-0,86
Mager >=58%	192	95%	1,708	458,70	2,39	-0,08	0,85			1,11	2,03	-1,50
Zeer Mager >=62%	2	1%	1,751	12,94	6,47	0,00	2,84			2,84	3,79	-3,00
<b>Totaal</b>	<b>202</b>	<b>100%</b>	<b>1,705</b>	<b>435,14</b>	<b>2,15</b>	<b>-0,08</b>	<b>0,66</b>			<b>1,11</b>	<b>1,96</b>	<b>-1,49</b>